

RESOLUTION NO. 4050

A RESOLUTION OF THE CITY COUNCIL OF THE CITY OF SOLEDAD, COUNTY OF MONTEREY, CALIFORNIA ORDERING THE LEVY AND COLLECTION OF ASSESSMENTS WITHIN THE DIAMOND RIDGE BENEFIT ASSESSMENT DISTRICT NO. 1 FOR FISCAL YEAR 2007/2008

The City Council of the City of Soledad, California (hereinafter referred to as the "City") does resolve as follows:

WHEREAS, the City Council has by previous Resolutions initiated proceedings and declared its intention to levy assessments for the Diamond Ridge Benefit Assessment District No. 1 (hereafter referred to as the "District") for the Fiscal Year commencing July 1, 2007 and ending June 30, 2008 pursuant to the provisions of the *Benefit Assessment Act of 1982, Chapter 6.4 of Part 1 of Division 2, Article 4 of the Government Code of California, beginning with Section 54703* (hereafter referred to as the "Act") to pay the costs and expenses of operating, maintaining, and servicing improvements and facilities located within public places within the boundaries of the District; and,

WHEREAS, the Engineer selected by the Council has prepared and filed with the City Clerk, and the City Clerk has presented to the Council, the Engineer's Annual Levy Report (hereafter referred to as the "Report") for the District that describes the District and the proposed levy and collection of assessments upon eligible parcels of land within the District, and the Council did by previous Resolution approve such Report; and,

WHEREAS, the City Council desires to levy and collect assessments against parcels of land within the District for the Fiscal Year commencing July 1, 2007 and ending June 30, 2008 to pay the costs and expenses of operating, maintaining, and servicing improvements and facilities located within the boundaries of the District; and,

WHEREAS, this City and its legal counsel have reviewed the provisions of Section XIID of the California State Constitution and found that the proposed assessments comply with these provisions.

NOW, THEREFORE, BE IT RESOLVED, DETERMINED, AND ORDERED BY THE CITY COUNCIL OF THE CITY OF SOLEDAD FOR THE DIAMOND RIDGE BENEFIT ASSESSMENT DISTRICT NO. 1 AS FOLLOWS:

Section 1 Following notice duly given, the City Council has held a full and fair Public Hearing regarding the District, the levy and collection of assessments, the Report prepared in connection therewith, and considered all oral and written statements, protests, and communications made or filed by interested persons regarding these matters.

Section 2 Based upon its review (and amendments, as applicable) of the Report, the City Council hereby finds and determines that:



- i) the land within the District will receive special benefit by the operation, maintenance, and servicing of improvements and facilities located in public places within the boundaries of the District; and,
- ii) the District includes all of the lands so benefited; and,
- iii) the net amount to be assessed upon the lands within the District in accordance with the fee for the Fiscal Year commencing July 1, 2007 and ending June 30, 2008 is apportioned by a formula and method which fairly distributes the net amount among all eligible parcels in proportion to the estimated benefits to be received by each parcel from the improvements and services.

Section 3 The Report and assessments as presented to the City Council and on file in the Office of the City Clerk are hereby confirmed as filed.

Section 4 The maintenance, operation, and servicing of the improvements and appurtenant facilities shall be performed pursuant to the Act. The City Council hereby orders the proposed improvements to be made, which improvements are briefly described as follows: the maintenance and operation of the following described improvements of a local nature on public lands within said District including street sweeping, storm drain lines, including necessary cleaning, repairs, replacement, electric current, supervision, debris removal, engineering and supervision and any and all other items of work necessary and incidental for the proper maintenance and operation thereof. The Report describes all new improvements or substantial changes in existing improvements.

Section 5 The County Auditor of the County of Monterey shall enter on the County Assessment Roll opposite each eligible parcel of land the amount of levy so apportioned by the formula and method outlined in the Report, and such levies shall be collected at the same time and in the same manner as the County taxes are collected. After collection by the County, the net amount of the levy shall be paid to the City Treasurer.

Section 6 The City Treasurer shall deposit all money representing assessments collected by the County for the District to the credit of a fund known as the "Improvement Fund, City of Soledad, Diamond Ridge Benefit Assessment District No. 1 and such monies shall be expended only for the maintenance, operation, and servicing improvements and facilities as described in Section 4.

Section 7 The adoption of this Resolution constitutes the District levy for the Fiscal Year commencing July 1, 2007 and ending June 30, 2008.

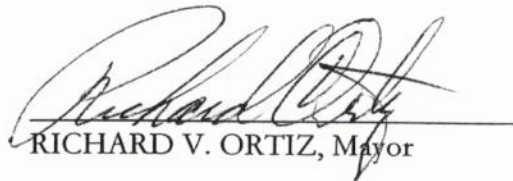
PASSED, APPROVED and ADOPTED this 18th day of July, 2007 by the following vote:

AYES, and in favor thereof, Councilmembers: Juan Saavedra, Pat Stephens, Mayor Pro Tem Christopher Bourke, Mayor Richard Ortiz

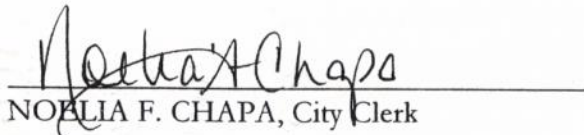
NOES, Councilmembers: None

ABSTAIN, Councilmembers: None

ABSENT, Councilmembers: Martha Camacho


RICHARD V. ORTIZ, Mayor

ATTEST:


NOELIA F. CHAPA, City Clerk

ENGINEER'S REPORT AFFIDAVIT
Diamond Ridge Benefit Assessment District No. 1
(Diamond Ridge, Phase I)

City of Soledad
Monterey County, State of California

This Report describes the District including the improvements, budgets, parcels and assessments to be levied for Fiscal Year 2007/2008 as they existed at the time of the passage of the Resolution of Intention. Reference is hereby made to the Monterey County Assessor's maps for a detailed description of the lines and dimensions of parcels within the District. The undersigned respectfully submits the enclosed Report as directed by the City Council.

Dated this 27th day of April, 2007.

MuniFinancial
Assessment Engineer
On Behalf of the City of Soledad

By: Bill Moses

Bill Moses
District Administration Services

By: 

John F. Knipe, P.E.
R.C.E. #27088

ENGINEER'S REPORT AFFIDAVIT
Diamond Ridge Benefit Assessment District No. 1
(Diamond Ridge, Phase I)

City of Soledad
Monterey County, State of California

This Report describes the District including the improvements, budgets, parcels and assessments to be levied for Fiscal Year 2007/2008 as they existed at the time of the passage of the Resolution of Intention. Reference is hereby made to the Monterey County Assessor's maps for a detailed description of the lines and dimensions of parcels within the District. The undersigned respectfully submits the enclosed Report as directed by the City Council.

Dated this 27th day of April, 2007.

MuniFinancial
Assessment Engineer
On Behalf of the City of Soledad

By: Bill Moses

Bill Moses
District Administration Services

By: 

John F. Kripe, P.E.
R.C. E. #27088

ENGINEER'S REPORT AFFIDAVIT
Diamond Ridge Benefit Assessment District No. 1
(Diamond Ridge, Phase I)

City of Soledad
Monterey County, State of California

This Report describes the District including the improvements, budgets, parcels and assessments to be levied for Fiscal Year 2007/2008 as they existed at the time of the passage of the Resolution of Intention. Reference is hereby made to the Monterey County Assessor's maps for a detailed description of the lines and dimensions of parcels within the District. The undersigned respectfully submits the enclosed Report as directed by the City Council.

Dated this 27th day of April, 2007.

MuniFinacial
Assessment Engineer
On Behalf of the City of Soledad

By: Bill Moses

Bill Moses
District Administration Services

By: 

John F. Knipe, P.E.
R. C. E. #27088

**CITY OF SOLEDAD
ENGINEER'S FINAL ANNUAL
LEVY REPORT**

Diamond Ridge

Benefit Assessment District No. 1

(Diamond Ridge, Phase I)

Fiscal Year 2007/2008



MuniFinancial

Corporate Office:

27368 Via Industria
Suite 110
Temecula, CA 92590
Tel: (951) 587-3500
Tel: (800) 755-MUNI (6864)
Fax: (951) 587-3510

Office Locations:

Anaheim, CA
Lancaster, CA
Los Angeles Regional Office
Oakland, CA
Sacramento, CA

Phoenix, AZ
Orlando, FL
Memphis, TN
Bellevue, WA
Seattle, WA

www.muni.com

ENGINEER'S REPORT AFFIDAVIT
Diamond Ridge Benefit Assessment District No. 1
(Diamond Ridge, Phase I)

City of Soledad
Monterey County, State of California

This Report describes the District including the improvements, budgets, parcels and assessments to be levied for Fiscal Year 2007/2008 as they existed at the time of the passage of the Resolution of Intention. Reference is hereby made to the Monterey County Assessor's maps for a detailed description of the lines and dimensions of parcels within the District. The undersigned respectfully submits the enclosed Report as directed by the City Council.

Dated this 27th day of April, 2007.

MuniFinancial
Assessment Engineer
On Behalf of the City of Soledad

By: Bill Moses

Bill Moses
District Administration Services

By: 

John E. Knipe, P.E.
R. C. E. #27088

CITY CLERK'S CERTIFICATION
Diamond Ridge Benefit Assessment District No. 1
(Diamond Ridge, Phase I)

City of Soledad
Monterey County, State of California

I HEREBY CERTIFY that the enclosed Engineer's Report, together with the Assessment Diagram thereto attached, was filed with me on the _____ day of _____, 2007.

NOELIA F. CHAPA, City Clerk
City of Soledad, Monterey County, California

By: _____

I HEREBY CERTIFY that the enclosed Engineer's Report, together with the Assessment Diagram thereto attached, was approved and confirmed by the City Council of the City of Soledad, California, on the _____ day of _____, 2007.

NOELIA F. CHAPA, City Clerk
City of Soledad, Monterey County, California

By: _____

I HEREBY CERTIFY THAT THE ENCLOSED Engineer's Report, together with the Assessment Diagram thereto attached, was filed with the County Auditor of the County of Monterey on the _____ day of _____, 2007.

NOELIA F. CHAPA, City Clerk
City of Soledad, Monterey County, California

By: _____

TABLE OF CONTENTS

| | |
|---|-----------|
| I. OVERVIEW | 5 |
| A. INTRODUCTION | 5 |
| B. APPLICABLE LEGISLATION..... | 5 |
| II. PLANS AND SPECIFICATIONS..... | 6 |
| A. DISTRICT BOUNDARIES, GENERAL DESCRIPTION OF THE DISTRICT AND SERVICES..... | 6 |
| III. METHOD OF APPORTIONMENT | 7 |
| A. GENERAL..... | 7 |
| B. BENEFIT ANALYSIS | 8 |
| C. ASSESSMENT METHODOLOGY | 9 |
| IV. DISTRICT BUDGET | 11 |
| A. DESCRIPTION OF BUDGET ITEMS..... | 11 |
| B. DISTRICT BUDGET | 13 |
| FISCAL YEAR 2007/2008 DISTRICT BUDGET..... | 13 |
| APPENDIX A — DISTRICT BOUNDARY MAPS..... | 14 |
| APPENDIX B — 2007/2008 ASSESSMENT ROLL..... | 15 |

I. OVERVIEW

A. Introduction

The City of Soledad ("City") annually levies and collects special assessments in order to maintain the improvements within the Diamond Ridge Benefit Assessment District No. 1 ("District"). The District is annually levied pursuant to the *Benefit Assessment Act of 1982, Chapter 6.4 of Division 2 of the California Government Code* ("1982 Act").

This Engineer's Annual Levy Report ("Report") has been prepared in accordance with the provisions of *Section 54716* of the 1982 Act. This Report describes the District, the improvements therein, any annexations or other modifications to the District including any substantial changes to the improvements, the method of apportionment, the boundaries of the District, and financial information including the district budgets and proposed annual assessments for Fiscal Year 2007/2008. The proposed assessments are based on the historic and estimated costs to maintain the improvements that provide a special benefit to properties within the District. The costs of improvements and the annual levy including all expenditures, deficits, surpluses, revenues, and reserves are assessed to each parcel within the District proportionate to the parcel's special benefits.

For the purposes of this Report, the word "parcel" refers to an individual property assigned its own Assessment Number by the County of Monterey Assessor's Office. The County of Monterey Auditor/Controller uses assessment parcel numbers and specific fund numbers to identify properties assessed for special district benefit assessments on the tax roll.

The assessments as approved will be submitted to the County Auditor/Controller to be included on the property tax roll for each parcel within the District. If any parcel submitted for collection is identified by the County Auditor/Controller to be an invalid parcel number for the current fiscal year, a corrected parcel number and/or new parcel numbers will be identified and resubmitted to the County. The assessment amount to be levied and collected for the resubmitted parcel or parcels shall be based on the method of apportionment and assessment rate contained in this Report as approved by the City Council.

B. Applicable Legislation

On November 5, 1996, California voters approved Proposition 218. This Constitutional amendment was the latest in a series of initiatives reducing the revenue-raising discretion of California local governments. The provisions of the Proposition, now California Constitutional Articles XIII C and XIII D, can be summarized in four general areas:

1. Strengthens the general and special tax provisions of Proposition 13 and Proposition 62.
2. Extends the initiative process to all local taxes, assessments, fees, and charges.
3. Adds substantive and procedural requirements to assessments.

4. Adds substantive and procedural requirements to property-related fees and charges.

Proposition 218 requires that beginning July 1, 1997, all new and existing assessments (with some exceptions) conform to new substantive and procedural requirements. However, certain assessments are exempted from the conformity requirement until they are increased.

Generally, these exemptions include:

- Assessments used exclusively to fund sidewalks, streets, sewers, water, flood control, drainage systems, or vector control.
- Assessments used exclusively for bond repayments, the cessation of which would violate the Contract Impairment Clause of the U.S. Constitution.
- Assessments previously approved by a majority of voters.
- Assessments approved by all the property owners at the time the assessment was initially imposed.

This Report contains the method of spread, and as such has been prepared in accordance with these requirements. Once the substantive requirements have been met, new procedural requirements must be followed before *new or increased* assessments may be levied. Generally, these procedures include:

- The City must mail notices regarding assessments to all property owners. Each notice must contain an assessment ballot for the property owner to indicate approval or disapproval of the assessment.

After mailing the notices, the City must hold a public hearing. At the conclusion of the public hearing, the City must tabulate all ballots received, counting each ballot in proportion to the total amount of the assessment. The assessment may be imposed only if 50% or more of the weighted ballots returned support the assessment. (Prior to Proposition 218, an assessment could be imposed if less than a majority of all landowners protested the imposition.)

II. PLANS AND SPECIFICATIONS

The location, boundaries and specific improvements provided within the District are described in this section. The determination and calculation of special benefit is discussed in the Method of Apportionment and the corresponding expenses, revenues and assessments are summarized in the annual budget.

A. District Boundaries, General Description of the District and Services

The Diamond Ridge Benefit Assessment District No. 1 is generally described as a district bounded on the north by the northerly boundary of Miravale, Phase I Tract Map, on the south by Gabilan Drive, on the east by Orchard Lane and on the west by Toledo Street.

Maintenance and operation of the following described improvements are of a local nature and are located on public lands within said district. Maintenance and operation includes street sweeping, storm drain lines, including necessary cleaning, repairs, replacement, electric current, supervision, debris removal, engineering and inspection and any and all other items of work necessary and incidental for the proper maintenance and operation thereof. Maintenance and operation also includes all additions, improvements and enlargements thereto which may hereafter be made on the previously described work within the following streets and on appurtenant improvement plans:

Maintenance and operations as described above are for the improvements located on the following streets.

Toledo Street (East Half), Orchard Lane, Gabilan Drive, San Antonio, Santa Ynez, San Miguel, and Los Flores Street: All previously described streets are shown on that certain map titled "Diamond Ridge, Phase I, Benefit Assessment District", on file with the City Clerk.

Maintenance and operation of the following described improvements are of a local nature and are located on public lands within said district. Maintenance and operation includes storm retention pond silt removal, bank stabilization and restoring percolation, including necessary cleaning, repairs, replacement, electric current, supervision, debris removal, pest abatement, engineering and inspection and any and all other items of work necessary and incidental for the proper maintenance and operation thereof. Maintenance and operation also includes all additions, improvements and enlargements thereto which may hereafter be made on the previously described work within the following area and on appurtenant improvement plans:

Storm Water Retention Pond: Improvements as shown on the approved improvement plans titled, "Miravale Estates, Phase I" and any subsequent revisions and as on the approved Miravale Estates Tentative Map within Parcel "A".

Incidental costs including contingencies, and assessment district incidentals including engineering, printing, and notices to property owners, collection costs, legal fees, administration and supervision, are assessed to the District on the same basis as the improvements specified above.

III. METHOD OF APPORTIONMENT

A. General

Pursuant to the 1982 Act, the legislative body establishes and determines the "estimated benefit received" by each parcel from the improvements. Additionally, Proposition 218 states:

"In any legal action contesting the validity of any assessment, the burden shall be on the agency to demonstrate that the property or properties in question receive a special benefit over and above the benefits conferred on the public at large and that the amount of any contested assessment is proportional to, and no greater than, the benefits conferred on the property or properties in question." Article XIII D Section 4f

Therefore, the agency also has a responsibility to identify the benefits conferred on each parcel, (i.e., "special benefit" versus "general benefit"). Proposition 218 defines special benefit as:

"... a particular and distinct benefit over and above general benefits conferred on real property located in the Annexation or to the public at large. General enhancement of property value does not constitute 'special benefit.'" Article XIII D Section 2i

This does not necessarily mean "special benefit" cannot be "estimated benefit".

Proposition 218 requires the City to identify all parcels which have a special benefit conferred upon them and upon which an assessment will be imposed. The proportionate special benefit to each parcel shall be determined in relationship to the entirety of the public improvements or the maintenance and operation expenses being provided, and:

"Only special benefits are assessable, and an agency shall separate the general benefits from the special benefits conferred on a parcel. Parcels within an Annexation that are owned or used by any agency, the State of California or the United States shall not be exempt from assessment unless the agency can demonstrate by clear and convincing evidence that those publicly owned parcels in fact receive no special benefit." Article XIII D Section 4a (Emphasis added)

B. Benefit Analysis

Each of the improvements and the associated costs have been carefully reviewed by the City and the corresponding assessments have been proportionately spread to each parcel based on special benefits received from the improvements.

Special Benefits — The method of apportionment (assessment methodology) is based on the premise that each of the assessed parcels within the District receives benefit from the improvements maintained and financed by annual assessments. Specifically, the assessments are for the maintenance of local street lighting and landscaped improvements. The desirability and security of properties within the District are enhanced by the presence of street lighting and well-maintained landscaping in close proximity to those properties.

The special benefits associated with the local landscaping improvements are specifically:

- Enhanced desirability of properties through association with the improvements.
- Improved aesthetic appeal of properties within the District providing a positive representation of the area.
- Enhanced adaptation of the urban environment within the natural environment from adequate green space and landscaping.

- Environmental enhancement through improved erosion resistance, and dust and debris control.
- Increased sense of pride in ownership of property within the District resulting from well-maintained improvements associated with the properties.
- Reduced criminal activity and property-related crimes (especially vandalism) against properties in the District through well-maintained surroundings and amenities including abatement of graffiti.
- Enhanced environmental quality of the parcels within the District by moderating temperatures, providing oxygenation and attenuating noise.

The special benefits of street lighting are the convenience, safety, and security of property, improvements, and goods. Specifically:

- Enhanced deterrence of crime and the aid to police protection.
- Increased nighttime safety on roads and highways.
- Improved ability of pedestrians and motorists to see.
- Improved ingress and egress to property.
- Reduced vandalism and other criminal acts and damage to improvements or property.
- Improved traffic circulation and reduced nighttime accidents and personal property loss.
- Increased promotion of business during nighttime hours in the case of commercial properties.

The assessments have been apportioned proportionate to the benefit received. It is the belief of the City that residential properties benefit from all of the maintained improvements and street lighting. The improvements maintained serve to increase the quality of life in the community and therefore all residents benefit, without regard to lot size, occupancy, etc. The assessments are therefore apportioned equally to all residential dwelling units within the City.

C. Assessment Methodology

Article XIID provides that publicly owned properties must be assessed unless there is clear and convincing evidence that those properties receive no special benefit from the assessment. Excepted from the assessment would be the areas of public streets, public avenues, public lanes, public roads, public drives, public courts, public alleys, public easements and right-of-way, public greenbelts and public parkways, and that portion of public property that is not developed and used for business purposes similar to private commercial, industrial, and institutional activities.

The improvements to be maintained and operated as a result of the formation of the Diamond Ridge Benefit Assessment District No. 1 were installed simultaneously with the development of residential units within the District. All such improvements were installed within or in areas in close proximity to the proposed developed residential lots.

As a result of the foregoing, the developed residential lots will receive 100% of the special benefits of the operation and maintenance of drainage, flood control, street lighting, and street improvements. These special benefits include enhanced neighborhood health and safety, and improved quality of life, generated when drainage, flood control and street improvements are in place, improved, operable, safe, clean, and maintained. In short, maintenance and operation of the proposed improvements will provide beautification, protection of improved property, enhanced comfort and increase the desirability of the immediate surroundings of the residential units within the District.

Moreover, because of the location of the improvements either within or close to the District itself, there is no general benefit to properties outside the District or the community as a whole, or a general benefit that is so negligible, it cannot be calculated for purposes of assessment.

As such, all costs associated with the maintenance and operation of Diamond Ridge Benefit Assessment District No. 1 improvements, including incidentals and appurtenances, shall be spread to all parcels within the District on a development unit basis. Developed parcels are those parcels on which a final subdivision map has been filed, and which obtained building permits as of the date of the final hearing on assessment. Said parcels also abut or obtain primary access from a public street.

In order to determine the appropriate assessment for each developed parcel, a budget for operation and maintenance costs associated with planned improvements in the entire Diamond Ridge Subdivision Project was prepared. In some instances, the total cost of operation and maintenance of a given improvement must be collected on an annual basis. Since the developed parcels in the District are the only parcels that derive special benefit from such activities, they initially must bear the entire cost of operation and maintenance. It is anticipated that assessments levied in this manner will be decreased as subsequent portions of the Subdivision develop, derive benefit from the operation and maintenance of such improvements, and form new Benefit Assessment Districts. In other instances, assessments have been prorated to reflect the District's proportionate share of the costs of a given operation and maintenance activity.

Factored development unit calculations for residential areas are as follows:

| | | |
|---------------------------------------|---|----------|
| Low Density Single Family Residential | = | 1.0 Unit |
| Future Medium Density Residential | = | 0.8 Unit |

In addition to a City fee for annual administration of the District, all assessed parcels shall be assessed an additional \$15.00 for processing the annual assessments through the County Auditor/Controller.

All assessments shall be adjusted annually based on a comparison of the Consumer Price Index of the San Francisco-Oakland-San Jose area for the previous year/month to the Consumer Price Index for the year/month assessments are determined in the future. The benchmark month is April.

IV. DISTRICT BUDGET

A. Description of Budget Items and Services

The following describes the services and costs that are funded through the District, shown in the District Budget, Section IV B.

DIRECT COSTS:

Percolation Pond, Street Sweeping, Storm Drain Repair and Maintenance, Engineering Plans and Specifications for Repair and Maintenance and Inspection and Overhead - Maintenance and operation of the following described improvements are of a local nature and are located on public lands within lands within said district. Maintenance and operation includes street sweeping, storm drain lines, including necessary cleaning, repairs, replacement, electric current, supervision, debris removal, engineering and inspection and any and all other items of work necessary and incidental for the proper maintenance and operation thereof. Maintenance and operation also includes all additions, improvements and enlargements thereto which may hereafter be made on the previously described work within the following streets and on appurtenant improvement plans:

Maintenance and operations as described above are for the improvements located on the following streets.

Toledo Street (East Half), Orchard Lane, Gabilan Drive, San Antonio, Santa Ynez, San Miguel, and Los Flores Street: All previously described streets are shown on that certain map titled "Diamond Ridge, Phase I, Benefit Assessment District", on file with the City Clerk.

Maintenance and operation of the following described improvements are of a local nature and are located on public lands within said district. Maintenance and operation includes storm retention pond silt removal, bank stabilization and restoring percolation, including necessary cleaning, repairs, replacement, electric current, supervision, debris removal, pest abatement, engineering and inspection and any and all other items of work necessary and incidental for the proper maintenance and operation thereof. Maintenance and operation also includes all additions, improvements and enlargements thereto which may hereafter be made on the previously described work within the following area and on appurtenant improvement plans:

Storm Water Retention Pond: Improvements as shown on the approved improvement plans titled, "Miravale Estates, Phase I" and any subsequent revisions and as on the approved Miravale Estates Tentative Map within Parcel "A".

Incidental costs including contingencies, and assessment district incidentals including engineering, printing, and notices to property owners, collection costs, legal fees, administration and supervision, are assessed to the District on the same basis as the improvements specified above.

ADMINISTRATION COSTS:

City/District Administration, Printing & Advertising - The cost to particular departments and staff of the City for providing the coordination of District services, operations, and maintenance of the District, response to public concerns and education and procedures associated with the levy and collection of assessments. Also includes the costs of contracting with professionals to provide any additional administrative, legal or engineering services specific to the District.

Collection Fees - All assessed parcels shall be assessed an additional \$15.00 County collection fee in addition to the City fee.

Collections/ (Credits) Applied to Levy:

Reserve Collection/(Transfer) — The 1972 Act pursuant to *Chapter 1, Article 4 Section 22569 (a)*, provides for a District Reserve Fund. This Reserve Fund provides for the collection of funds to operate the District from the time period of July 1 (beginning of the Fiscal Year) through December 10th or when the County provides the City with the first installment of assessments collected from the property tax bills (typically January or February). Negative amounts shown for this budget item represent transfers from the Reserve Fund that reduces the Balance to Levy. Maintaining a fully funded Reserve eliminates the need for the City to transfer funds from non-District accounts to pay for operational expenses during the first half of the fiscal year and also provides the District with sufficient funds to address any unforeseen or unusual expenditures that may occur during the year.

Balance to Levy — This is the total amount to be collected for the current fiscal year through the annual assessments (for special benefits). The Balance to Levy represents the sum of Total Direct and Administration Costs and Reserve Fund Contributions or Transfers. Only those costs related to the improvements identified as special benefits are levied and collected on the tax roll.

B. District Budget

Fiscal Year 2007/2008 District Budget

| Expenditure Items | 2007/08 Budget |
|---|--------------------|
| Percolation Pond - routine maintenance and dredging (\$12,000 reserve each year, not including landscaping \$230,000 reserve maximum) | \$12,000.00 |
| Street Sweeping - once a week | 19,000.00 |
| Storm Drain Repair/Maint. (completed every 3 years, \$15,000 - \$5,000 reserve each year) | 5,000.00 |
| Engineering Plans & Specifications for Maintenance/Repair - \$5,000 over 5 years, \$1,000 reserve each year | 1,000.00 |
| City of Soledad Inspection and Overhead | 4,000.00 |
| Reserve Collection / (Transfer) | 7,979.51 |
| Total Direct Expenses / Adjustments | \$48,979.51 |
| City Administration (6%+/-) | 4,175.66 |
| Contingency (15%+/-) | 10,439.15 |
| District Administration | 5,000.00 |
| Printing & Advertising | 1,000.00 |
| Collection (County) | 5,205.00 |
| Total Administration Expenses | \$25,819.81 |
| TOTAL OF EXPENSES | \$74,799.32 |

APPENDIX A — DISTRICT BOUNDARY MAPS

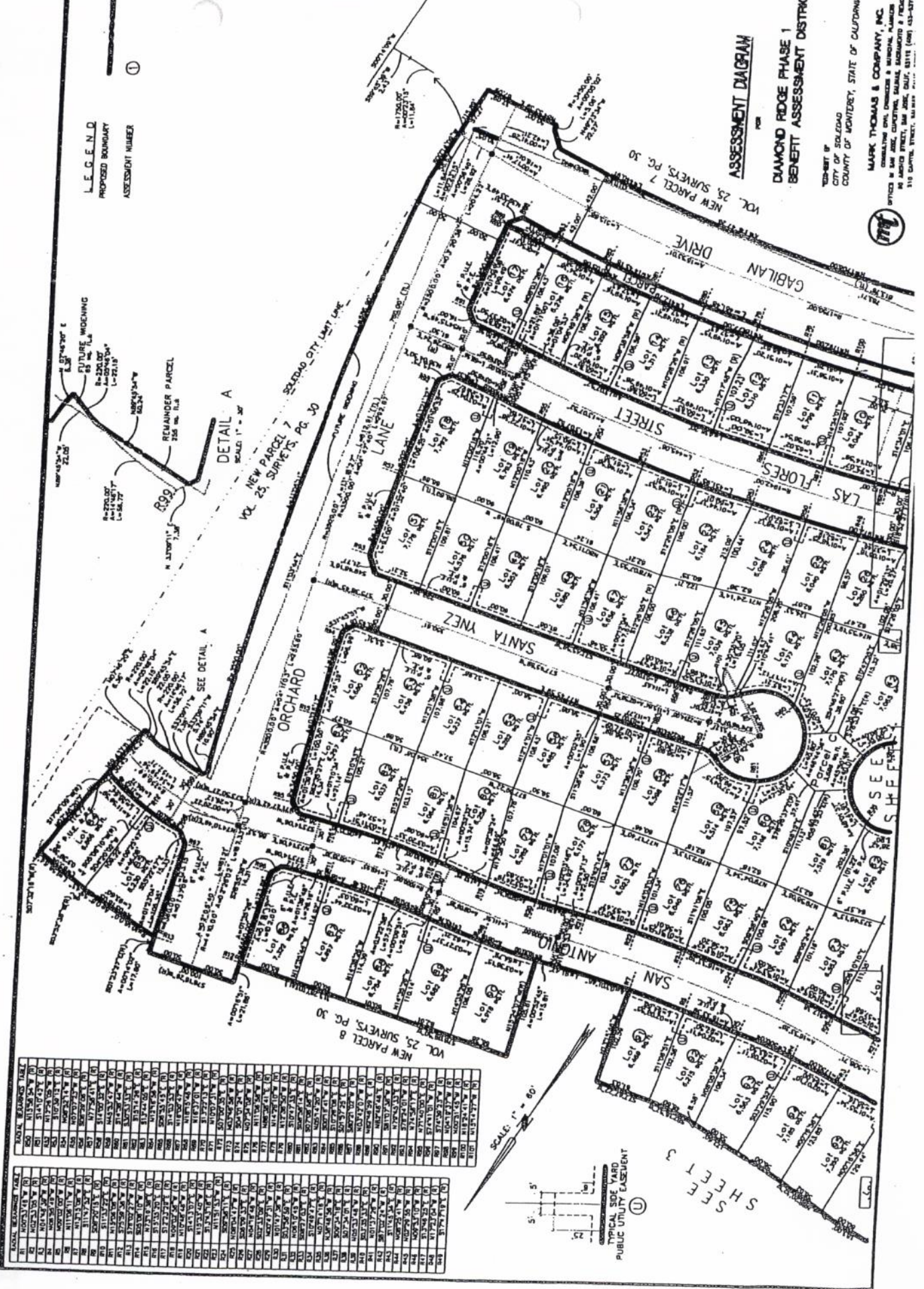
The boundary map for the District has been previously approved and submitted to the City in the format required by the 1972 Act. The map is on file in the Office of the City Clerk and by reference made part of this Report.

The parcel identification, lines, and dimensions of each parcel within the District are those lines and dimensions shown on the Monterey County Assessor's Map for the year in which this Report was prepared and by reference are incorporated and made part of this Report.

LEGEND
 PROPOSED BOUNDARY
 ASSESSMENT NUMBER

TABLE BEARING TABLE

| NO. | ASSESSMENT NUMBER | AREA (SQ. FT.) | AREA (SQ. M.) | AREA (AC.) |
|-----|-------------------|----------------|---------------|------------|
| 1 | 101 | 10,000 | 929 | 0.23 |
| 2 | 102 | 10,000 | 929 | 0.23 |
| 3 | 103 | 10,000 | 929 | 0.23 |
| 4 | 104 | 10,000 | 929 | 0.23 |
| 5 | 105 | 10,000 | 929 | 0.23 |
| 6 | 106 | 10,000 | 929 | 0.23 |
| 7 | 107 | 10,000 | 929 | 0.23 |
| 8 | 108 | 10,000 | 929 | 0.23 |
| 9 | 109 | 10,000 | 929 | 0.23 |
| 10 | 110 | 10,000 | 929 | 0.23 |
| 11 | 111 | 10,000 | 929 | 0.23 |
| 12 | 112 | 10,000 | 929 | 0.23 |
| 13 | 113 | 10,000 | 929 | 0.23 |
| 14 | 114 | 10,000 | 929 | 0.23 |
| 15 | 115 | 10,000 | 929 | 0.23 |
| 16 | 116 | 10,000 | 929 | 0.23 |
| 17 | 117 | 10,000 | 929 | 0.23 |
| 18 | 118 | 10,000 | 929 | 0.23 |
| 19 | 119 | 10,000 | 929 | 0.23 |
| 20 | 120 | 10,000 | 929 | 0.23 |
| 21 | 121 | 10,000 | 929 | 0.23 |
| 22 | 122 | 10,000 | 929 | 0.23 |
| 23 | 123 | 10,000 | 929 | 0.23 |
| 24 | 124 | 10,000 | 929 | 0.23 |
| 25 | 125 | 10,000 | 929 | 0.23 |
| 26 | 126 | 10,000 | 929 | 0.23 |
| 27 | 127 | 10,000 | 929 | 0.23 |
| 28 | 128 | 10,000 | 929 | 0.23 |
| 29 | 129 | 10,000 | 929 | 0.23 |
| 30 | 130 | 10,000 | 929 | 0.23 |
| 31 | 131 | 10,000 | 929 | 0.23 |
| 32 | 132 | 10,000 | 929 | 0.23 |
| 33 | 133 | 10,000 | 929 | 0.23 |
| 34 | 134 | 10,000 | 929 | 0.23 |
| 35 | 135 | 10,000 | 929 | 0.23 |
| 36 | 136 | 10,000 | 929 | 0.23 |
| 37 | 137 | 10,000 | 929 | 0.23 |
| 38 | 138 | 10,000 | 929 | 0.23 |
| 39 | 139 | 10,000 | 929 | 0.23 |
| 40 | 140 | 10,000 | 929 | 0.23 |
| 41 | 141 | 10,000 | 929 | 0.23 |
| 42 | 142 | 10,000 | 929 | 0.23 |
| 43 | 143 | 10,000 | 929 | 0.23 |
| 44 | 144 | 10,000 | 929 | 0.23 |
| 45 | 145 | 10,000 | 929 | 0.23 |
| 46 | 146 | 10,000 | 929 | 0.23 |
| 47 | 147 | 10,000 | 929 | 0.23 |
| 48 | 148 | 10,000 | 929 | 0.23 |
| 49 | 149 | 10,000 | 929 | 0.23 |
| 50 | 150 | 10,000 | 929 | 0.23 |
| 51 | 151 | 10,000 | 929 | 0.23 |
| 52 | 152 | 10,000 | 929 | 0.23 |
| 53 | 153 | 10,000 | 929 | 0.23 |
| 54 | 154 | 10,000 | 929 | 0.23 |
| 55 | 155 | 10,000 | 929 | 0.23 |
| 56 | 156 | 10,000 | 929 | 0.23 |
| 57 | 157 | 10,000 | 929 | 0.23 |
| 58 | 158 | 10,000 | 929 | 0.23 |
| 59 | 159 | 10,000 | 929 | 0.23 |
| 60 | 160 | 10,000 | 929 | 0.23 |
| 61 | 161 | 10,000 | 929 | 0.23 |
| 62 | 162 | 10,000 | 929 | 0.23 |
| 63 | 163 | 10,000 | 929 | 0.23 |
| 64 | 164 | 10,000 | 929 | 0.23 |
| 65 | 165 | 10,000 | 929 | 0.23 |
| 66 | 166 | 10,000 | 929 | 0.23 |
| 67 | 167 | 10,000 | 929 | 0.23 |
| 68 | 168 | 10,000 | 929 | 0.23 |
| 69 | 169 | 10,000 | 929 | 0.23 |
| 70 | 170 | 10,000 | 929 | 0.23 |
| 71 | 171 | 10,000 | 929 | 0.23 |
| 72 | 172 | 10,000 | 929 | 0.23 |
| 73 | 173 | 10,000 | 929 | 0.23 |
| 74 | 174 | 10,000 | 929 | 0.23 |
| 75 | 175 | 10,000 | 929 | 0.23 |
| 76 | 176 | 10,000 | 929 | 0.23 |
| 77 | 177 | 10,000 | 929 | 0.23 |
| 78 | 178 | 10,000 | 929 | 0.23 |
| 79 | 179 | 10,000 | 929 | 0.23 |
| 80 | 180 | 10,000 | 929 | 0.23 |
| 81 | 181 | 10,000 | 929 | 0.23 |
| 82 | 182 | 10,000 | 929 | 0.23 |
| 83 | 183 | 10,000 | 929 | 0.23 |
| 84 | 184 | 10,000 | 929 | 0.23 |
| 85 | 185 | 10,000 | 929 | 0.23 |
| 86 | 186 | 10,000 | 929 | 0.23 |
| 87 | 187 | 10,000 | 929 | 0.23 |
| 88 | 188 | 10,000 | 929 | 0.23 |
| 89 | 189 | 10,000 | 929 | 0.23 |
| 90 | 190 | 10,000 | 929 | 0.23 |
| 91 | 191 | 10,000 | 929 | 0.23 |
| 92 | 192 | 10,000 | 929 | 0.23 |
| 93 | 193 | 10,000 | 929 | 0.23 |
| 94 | 194 | 10,000 | 929 | 0.23 |
| 95 | 195 | 10,000 | 929 | 0.23 |
| 96 | 196 | 10,000 | 929 | 0.23 |
| 97 | 197 | 10,000 | 929 | 0.23 |
| 98 | 198 | 10,000 | 929 | 0.23 |
| 99 | 199 | 10,000 | 929 | 0.23 |
| 100 | 200 | 10,000 | 929 | 0.23 |



ASSESSMENT DIAGRAM

DIAMOND RIDGE PHASE 1
 BENEFIT ASSESSMENT DISTRICT

CITY OF SOLEDAD
 COUNTY OF MONTEREY, STATE OF CALIFORNIA

MARK THOMAS & COMPANY, INC.
 CONSULTING CIVIL ENGINEERS & SURVEYORS
 110 CANTON STREET, SUITE 200, SOLEDAD, CALIF. 95072 (408) 433-3771



APPENDIX B — 2007/2008 ASSESSMENT ROLL

Parcel identification, for each lot or parcel within the District, shall be the parcel as shown on the Monterey County Assessor's map for the year in which this Report is prepared.

A listing of parcels assessed within this District, along with the assessment amounts, is included on the following pages. If any parcel submitted for collection is identified by the County Auditor/Controller to be an invalid parcel number for the current fiscal year, a corrected parcel number and/or new parcel numbers will be identified and resubmitted to the County Auditor/Controller. The assessment amount to be levied and collected for the resubmitted parcel or parcels shall be based on the method of apportionment and assessment rate approved in this Report. Therefore, if a single parcel has changed to multiple parcels, the assessment amount applied to each of the new parcels shall be recalculated and applied according to the approved method of apportionment and assessment rate rather than a proportionate share of the original assessment.

Non-assessable lots or parcels include areas of public streets and other roadways (typically not assigned an APN by the County); dedicated public easements, open space areas and rights-of-ways including public greenbelts and parkways; utility rights-of-ways; common areas; landlocked parcels, small parcels vacated by the County, bifurcated lots, and any other property that can not be developed or has specific development restrictions. These types of parcels are considered to receive little or no benefit from the improvements and are therefore exempted from assessment.

| ASSESSMENT NUMBER | ASSESSOR'S PARCEL NO. | ASSESSMENT UNITS | ASSESSMENT 2007/2008 | COLLECTION FEE | TOTAL LEVY |
|-------------------|-----------------------|------------------|----------------------|----------------|------------|
| 1 | 022-442-001 | 1 | \$200.56 | \$15.00 | \$215.56 |
| 2 | 022-442-002 | 1 | 200.56 | 15.00 | 215.56 |
| 3 | 022-442-003 | 1 | 200.56 | 15.00 | 215.56 |
| 4 | 022-442-004 | 1 | 200.56 | 15.00 | 215.56 |
| 5 | 022-442-005 | 1 | 200.56 | 15.00 | 215.56 |
| 6 | 022-442-006 | 1 | 200.56 | 15.00 | 215.56 |
| 7 | 022-442-007 | 1 | 200.56 | 15.00 | 215.56 |
| 8 | 022-442-008 | 1 | 200.56 | 15.00 | 215.56 |
| 9 | 022-442-009 | 1 | 200.56 | 15.00 | 215.56 |
| 10 | 022-442-010 | 1 | 200.56 | 15.00 | 215.56 |
| 11 | 022-442-011 | 1 | 200.56 | 15.00 | 215.56 |
| 12 | 022-442-012 | 1 | 200.56 | 15.00 | 215.56 |
| 13 | 022-442-013 | 1 | 200.56 | 15.00 | 215.56 |
| 14 | 022-442-014 | 1 | 200.56 | 15.00 | 215.56 |
| 15 | 022-442-015 | 1 | 200.56 | 15.00 | 215.56 |
| 16 | 022-442-016 | 1 | 200.56 | 15.00 | 215.56 |
| 17 | 022-442-017 | 1 | 200.56 | 15.00 | 215.56 |
| 18 | 022-442-018 | 1 | 200.56 | 15.00 | 215.56 |
| 19 | 022-442-019 | 1 | 200.56 | 15.00 | 215.56 |
| 20 | 022-442-020 | 1 | 200.56 | 15.00 | 215.56 |
| 21 | 022-442-021 | 1 | 200.56 | 15.00 | 215.56 |
| 22 | 022-442-022 | 1 | 200.56 | 15.00 | 215.56 |
| 23 | 022-442-023 | 1 | 200.56 | 15.00 | 215.56 |
| 24 | 022-442-024 | 1 | 200.56 | 15.00 | 215.56 |
| 25 | 022-442-025 | 1 | 200.56 | 15.00 | 215.56 |
| 26 | 022-442-026 | 1 | 200.56 | 15.00 | 215.56 |
| 27 | 022-442-027 | 1 | 200.56 | 15.00 | 215.56 |
| 28 | 022-442-028 | 1 | 200.56 | 15.00 | 215.56 |
| 29 | 022-442-029 | 1 | 200.56 | 15.00 | 215.56 |
| 30 | 022-442-030 | 1 | 200.56 | 15.00 | 215.56 |
| 31 | 022-442-031 | 1 | 200.56 | 15.00 | 215.56 |
| 32 | 022-442-032 | 1 | 200.56 | 15.00 | 215.56 |
| 33 | 022-442-033 | 1 | 200.56 | 15.00 | 215.56 |
| 34 | 022-442-034 | 1 | 200.56 | 15.00 | 215.56 |
| 35 | 022-442-035 | 1 | 200.56 | 15.00 | 215.56 |
| 36 | 022-442-036 | 1 | 200.56 | 15.00 | 215.56 |
| 37 | 022-442-037 | 1 | 200.56 | 15.00 | 215.56 |
| 38 | 022-442-038 | 1 | 200.56 | 15.00 | 215.56 |
| 39 | 022-442-039 | 1 | 200.56 | 15.00 | 215.56 |
| 40 | 022-442-040 | 1 | 200.56 | 15.00 | 215.56 |
| 41 | 022-442-041 | 1 | 200.56 | 15.00 | 215.56 |
| 42 | 022-442-042 | 1 | 200.56 | 15.00 | 215.56 |
| 43 | 022-442-043 | 1 | 200.56 | 15.00 | 215.56 |
| 44 | 022-442-044 | 1 | 200.56 | 15.00 | 215.56 |
| 45 | 022-442-045 | 1 | 200.56 | 15.00 | 215.56 |
| 46 | 022-442-046 | 1 | 200.56 | 15.00 | 215.56 |
| 47 | 022-442-047 | 1 | 200.56 | 15.00 | 215.56 |
| 48 | 022-442-048 | 1 | 200.56 | 15.00 | 215.56 |
| 49 | 022-442-049 | 1 | 200.56 | 15.00 | 215.56 |
| 50 | 022-442-050 | 1 | 200.56 | 15.00 | 215.56 |
| 51 | 022-442-051 | 1 | 200.56 | 15.00 | 215.56 |

| ASSESSMENT NUMBER | ASSESSOR'S PARCEL NO. | ASSESSMENT UNITS | ASSESSMENT 2007/2008 | COLLECTION FEE | TOTAL LEVY |
|-------------------|-----------------------|------------------|----------------------|----------------|------------|
| 52 | 022-442-052 | 1 | \$200.56 | \$15.00 | \$215.56 |
| 53 | 022-442-053 | 1 | 200.56 | 15.00 | 215.56 |
| 54 | 022-442-054 | 1 | 200.56 | 15.00 | 215.56 |
| 55 | 022-442-055 | 1 | 200.56 | 15.00 | 215.56 |
| 56 | 022-442-056 | 1 | 200.56 | 15.00 | 215.56 |
| 57 | 022-442-057 | 1 | 200.56 | 15.00 | 215.56 |
| 58 | 022-442-058 | 1 | 200.56 | 15.00 | 215.56 |
| 59 | 022-442-059 | 1 | 200.56 | 15.00 | 215.56 |
| 60 | 022-442-060 | 1 | 200.56 | 15.00 | 215.56 |
| 61 | 022-442-061 | 1 | 200.56 | 15.00 | 215.56 |
| 62 | 022-442-062 | 1 | 200.56 | 15.00 | 215.56 |
| 63 | 022-442-063 | 1 | 200.56 | 15.00 | 215.56 |
| 64 | 022-442-064 | 1 | 200.56 | 15.00 | 215.56 |
| 65 | 022-442-065 | 1 | 200.56 | 15.00 | 215.56 |
| 66 | 022-442-066 | 1 | 200.56 | 15.00 | 215.56 |
| 67 | 022-442-067 | 1 | 200.56 | 15.00 | 215.56 |
| 68 | 022-442-068 | 1 | 200.56 | 15.00 | 215.56 |
| 69 | 022-442-069 | 1 | 200.56 | 15.00 | 215.56 |
| 70 | 022-442-070 | 1 | 200.56 | 15.00 | 215.56 |
| 71 | 022-442-071 | 1 | 200.56 | 15.00 | 215.56 |
| 72 | 022-442-072 | 1 | 200.56 | 15.00 | 215.56 |
| 73 | 022-442-073 | 1 | 200.56 | 15.00 | 215.56 |
| 74 | 022-442-074 | 1 | 200.56 | 15.00 | 215.56 |
| 75 | 022-442-075 | 1 | 200.56 | 15.00 | 215.56 |
| 76 | 022-442-076 | 1 | 200.56 | 15.00 | 215.56 |
| 77 | 022-442-077 | 1 | 200.56 | 15.00 | 215.56 |
| 78 | 022-442-078 | 1 | 200.56 | 15.00 | 215.56 |
| 79 | 022-442-079 | 1 | 200.56 | 15.00 | 215.56 |
| 80 | 022-442-080 | 1 | 200.56 | 15.00 | 215.56 |
| 81 | 022-442-081 | 1 | 200.56 | 15.00 | 215.56 |
| 82 | 022-442-082 | 1 | 200.56 | 15.00 | 215.56 |
| 83 | 022-442-083 | 1 | 200.56 | 15.00 | 215.56 |
| 84 | 022-442-084 | 1 | 200.56 | 15.00 | 215.56 |
| 85 | 022-442-085 | 1 | 200.56 | 15.00 | 215.56 |
| 86 | 022-442-086 | 1 | 200.56 | 15.00 | 215.56 |
| 87 | 022-442-087 | 1 | 200.56 | 15.00 | 215.56 |
| 88 | 022-442-088 | 1 | 200.56 | 15.00 | 215.56 |
| 89 | 022-442-089 | 1 | 200.56 | 15.00 | 215.56 |
| 90 | 022-442-090 | 1 | 200.56 | 15.00 | 215.56 |
| 91 | 022-442-091 | 1 | 200.56 | 15.00 | 215.56 |
| 92 | 022-442-092 | 1 | 200.56 | 15.00 | 215.56 |
| 93 | 022-442-093 | 1 | 200.56 | 15.00 | 215.56 |
| 94 | 022-442-094 | 1 | 200.56 | 15.00 | 215.56 |
| 95 | 022-442-095 | 1 | 200.56 | 15.00 | 215.56 |
| 96 | 022-442-096 | 1 | 200.56 | 15.00 | 215.56 |
| 97 | 022-442-097 | 1 | 200.56 | 15.00 | 215.56 |
| 98 | 022-442-098 | 1 | 200.56 | 15.00 | 215.56 |
| 99-1 | 022-481-001 | 1 | 200.56 | 15.00 | 215.56 |
| 99-2 | 022-481-002 | 1 | 200.56 | 15.00 | 215.56 |
| 99-3 | 022-481-003 | 1 | 200.56 | 15.00 | 215.56 |
| 99-4 | 022-481-004 | 1 | 200.56 | 15.00 | 215.56 |

| ASSESSMENT NUMBER | ASSESSOR'S PARCEL NO. | ASSESSMENT UNITS | ASSESSMENT 2007/2008 | COLLECTION FEE | TOTAL LEVY |
|-------------------|-----------------------|------------------|----------------------|----------------|------------|
| 99-5 | 022-481-005 | 1 | \$200.56 | \$15.00 | \$215.56 |
| 99-6 | 022-481-006 | 1 | 200.56 | 15.00 | 215.56 |
| 99-7 | 022-481-007 | 1 | 200.56 | 15.00 | 215.56 |
| 99-8 | 022-481-008 | 1 | 200.56 | 15.00 | 215.56 |
| 99-9 | 022-481-009 | 1 | 200.56 | 15.00 | 215.56 |
| 99-10 | 022-481-010 | 1 | 200.56 | 15.00 | 215.56 |
| 99-11 | 022-481-011 | 1 | 200.56 | 15.00 | 215.56 |
| 99-12 | 022-481-012 | 1 | 200.56 | 15.00 | 215.56 |
| 99-13 | 022-481-013 | 1 | 200.56 | 15.00 | 215.56 |
| 99-14 | 022-481-014 | 1 | 200.56 | 15.00 | 215.56 |
| 99-15 | 022-481-015 | 1 | 200.56 | 15.00 | 215.56 |
| 99-16 | 022-481-016 | 1 | 200.56 | 15.00 | 215.56 |
| 99-17 | 022-481-017 | 1 | 200.56 | 15.00 | 215.56 |
| 99-18 | 022-481-018 | 1 | 200.56 | 15.00 | 215.56 |
| 99-19 | 022-481-019 | 1 | 200.56 | 15.00 | 215.56 |
| 99-20 | 022-481-020 | 1 | 200.56 | 15.00 | 215.56 |
| 99-21 | 022-481-021 | 1 | 200.56 | 15.00 | 215.56 |
| 99-22 | 022-481-022 | 1 | 200.56 | 15.00 | 215.56 |
| 99-23 | 022-481-023 | 1 | 200.56 | 15.00 | 215.56 |
| 99-24 | 022-481-024 | 1 | 200.56 | 15.00 | 215.56 |
| 99-25 | 022-481-025 | 1 | 200.56 | 15.00 | 215.56 |
| 99-26 | 022-481-026 | 1 | 200.56 | 15.00 | 215.56 |
| 99-27 | 022-481-027 | 1 | 200.56 | 15.00 | 215.56 |
| 99-28 | 022-481-028 | 1 | 200.56 | 15.00 | 215.56 |
| 99-29 | 022-481-029 | 1 | 200.56 | 15.00 | 215.56 |
| 99-30 | 022-481-030 | 1 | 200.56 | 15.00 | 215.56 |
| 99-31 | 022-481-031 | 1 | 200.56 | 15.00 | 215.56 |
| 99-32 | 022-481-032 | 1 | 200.56 | 15.00 | 215.56 |
| 99-33 | 022-481-033 | 1 | 200.56 | 15.00 | 215.56 |
| 99-34 | 022-481-034 | 1 | 200.56 | 15.00 | 215.56 |
| 99-35 | 022-481-035 | 1 | 200.56 | 15.00 | 215.56 |
| 99-36 | 022-481-036 | 1 | 200.56 | 15.00 | 215.56 |
| 99-37 | 022-481-037 | 1 | 200.56 | 15.00 | 215.56 |
| 99-38 | 022-481-038 | 1 | 200.56 | 15.00 | 215.56 |
| 99-39 | 022-481-039 | 1 | 200.56 | 15.00 | 215.56 |
| 99-40 | 022-481-040 | 1 | 200.56 | 15.00 | 215.56 |
| 99-41 | 022-481-041 | 1 | 200.56 | 15.00 | 215.56 |
| 99-42 | 022-481-042 | 1 | 200.56 | 15.00 | 215.56 |
| 99-43 | 022-481-043 | 1 | 200.56 | 15.00 | 215.56 |
| 99-44 | 022-481-044 | 1 | 200.56 | 15.00 | 215.56 |
| 99-45 | 022-481-045 | 1 | 200.56 | 15.00 | 215.56 |
| 99-46 | 022-481-046 | 1 | 200.56 | 15.00 | 215.56 |
| 99-47 | 022-481-047 | 1 | 200.56 | 15.00 | 215.56 |
| 99-48 | 022-481-048 | 1 | 200.56 | 15.00 | 215.56 |
| 99-49 | 022-481-049 | 1 | 200.56 | 15.00 | 215.56 |
| 99-50 | 022-481-050 | 1 | 200.56 | 15.00 | 215.56 |
| 99-51 | 022-481-051 | 1 | 200.56 | 15.00 | 215.56 |
| 99-52 | 022-481-052 | 1 | 200.56 | 15.00 | 215.56 |
| 99-53 | 022-481-053 | 1 | 200.56 | 15.00 | 215.56 |
| 99-54 | 022-481-054 | 1 | 200.56 | 15.00 | 215.56 |
| 99-55 | 022-481-055 | 1 | 200.56 | 15.00 | 215.56 |

| ASSESSMENT NUMBER | ASSESSOR'S PARCEL NO. | ASSESSMENT UNITS | ASSESSMENT 2007/2008 | COLLECTION FEE | TOTAL LEVY |
|-------------------|-----------------------|------------------|----------------------|----------------|------------|
| 99-56 | 022-481-056 | 1 | \$200.56 | \$15.00 | \$215.56 |
| 99-57 | 022-481-057 | 1 | 200.56 | 15.00 | 215.56 |
| 99-58 | 022-481-058 | 1 | 200.56 | 15.00 | 215.56 |
| 99-59 | 022-481-059 | 1 | 200.56 | 15.00 | 215.56 |
| 99-60 | 022-481-060 | 1 | 200.56 | 15.00 | 215.56 |
| 99-61 | 022-481-061 | 1 | 200.56 | 15.00 | 215.56 |
| 99-62 | 022-481-062 | 1 | 200.56 | 15.00 | 215.56 |
| 99-63 | 022-481-063 | 1 | 200.56 | 15.00 | 215.56 |
| 99-64 | 022-481-064 | 1 | 200.56 | 15.00 | 215.56 |
| 99-65 | 022-481-065 | 1 | 200.56 | 15.00 | 215.56 |
| 99-66 | 022-481-066 | 1 | 200.56 | 15.00 | 215.56 |
| 99-67 | 022-481-067 | 1 | 200.56 | 15.00 | 215.56 |
| 99-68 | 022-481-068 | 1 | 200.56 | 15.00 | 215.56 |
| 99-69 | 022-481-069 | 1 | 200.56 | 15.00 | 215.56 |
| 99-70 | 022-481-070 | 1 | 200.56 | 15.00 | 215.56 |
| 99-71 | 022-481-071 | 1 | 200.56 | 15.00 | 215.56 |
| 99-72 | 022-481-072 | 1 | 200.56 | 15.00 | 215.56 |
| 99-73 | 022-481-073 | 1 | 200.56 | 15.00 | 215.56 |
| 99-74 | 022-481-074 | 1 | 200.56 | 15.00 | 215.56 |
| 99-75 | 022-481-075 | 1 | 200.56 | 15.00 | 215.56 |
| 99-76 | 022-481-076 | 1 | 200.56 | 15.00 | 215.56 |
| 99-77 | 022-481-077 | 1 | 200.56 | 15.00 | 215.56 |
| 99-78 | 022-481-078 | 1 | 200.56 | 15.00 | 215.56 |
| 99-79 | 022-481-079 | 1 | 200.56 | 15.00 | 215.56 |
| 99-80 | 022-481-080 | 1 | 200.56 | 15.00 | 215.56 |
| 99-81 | 022-481-081 | 1 | 200.56 | 15.00 | 215.56 |
| 99-82 | 022-481-082 | 1 | 200.56 | 15.00 | 215.56 |
| 99-83 | 022-481-083 | 1 | 200.56 | 15.00 | 215.56 |
| 99-84 | 022-481-084 | 1 | 200.56 | 15.00 | 215.56 |
| 99-85 | 022-481-085 | 1 | 200.56 | 15.00 | 215.56 |
| 99-86 | 022-481-086 | 1 | 200.56 | 15.00 | 215.56 |
| 99-87 | 022-481-087 | 1 | 200.56 | 15.00 | 215.56 |
| 99-88 | 022-481-088 | 1 | 200.56 | 15.00 | 215.56 |
| 99-89 | 022-481-089 | 1 | 200.56 | 15.00 | 215.56 |
| 99-90 | 022-481-090 | 1 | 200.56 | 15.00 | 215.56 |
| 99-91 | 022-482-001 | 1 | 200.56 | 15.00 | 215.56 |
| 99-92 | 022-482-002 | 1 | 200.56 | 15.00 | 215.56 |
| 99-93 | 022-482-014 | 1 | 200.56 | 15.00 | 215.56 |
| 99-94 | 022-482-015 | 1 | 200.56 | 15.00 | 215.56 |
| 99-95 | 022-482-016 | 1 | 200.56 | 15.00 | 215.56 |
| 99-96 | 022-482-017 | 1 | 200.56 | 15.00 | 215.56 |
| 99-97 | 022-482-018 | 1 | 200.56 | 15.00 | 215.56 |
| 99-98 | 022-482-019 | 1 | 200.56 | 15.00 | 215.56 |
| 99-99 | 022-482-020 | 1 | 200.56 | 15.00 | 215.56 |
| 99-100 | 022-482-021 | 1 | 200.56 | 15.00 | 215.56 |
| 99-101 | 022-482-022 | 1 | 200.56 | 15.00 | 215.56 |
| 99-102 | 022-482-023 | 1 | 200.56 | 15.00 | 215.56 |
| 99-103 | 022-482-024 | 1 | 200.56 | 15.00 | 215.56 |
| 99-104 | 022-482-025 | 1 | 200.56 | 15.00 | 215.56 |
| 99-105 | 022-482-026 | 1 | 200.56 | 15.00 | 215.56 |
| 99-106 | 022-482-027 | 1 | 200.56 | 15.00 | 215.56 |

| ASSESSMENT NUMBER | ASSESSOR'S PARCEL NO. | ASSESSMENT UNITS | ASSESSMENT 2007/2008 | COLLECTION FEE | TOTAL LEVY |
|-------------------|-----------------------|------------------|----------------------|----------------|------------|
| 99-107 | 022-482-028 | 1 | \$200.56 | \$15.00 | \$215.56 |
| 99-108 | 022-482-029 | 1 | 200.56 | 15.00 | 215.56 |
| 99-109 | 022-482-030 | 1 | 200.56 | 15.00 | 215.56 |
| 99-110 | 022-482-031 | 1 | 200.56 | 15.00 | 215.56 |
| 99-111 | 022-482-032 | 1 | 200.56 | 15.00 | 215.56 |
| 99-112 | 022-482-033 | 1 | 200.56 | 15.00 | 215.56 |
| 99-113 | 022-482-034 | 1 | 200.56 | 15.00 | 215.56 |
| 99-185 | 022-482-036 | 1 | 200.56 | 15.00 | 215.56 |
| 99-186 | 022-482-037 | 1 | 200.56 | 15.00 | 215.56 |
| 99-187 | 022-482-038 | 1 | 200.56 | 15.00 | 215.56 |
| 99-188 | 022-482-039 | 1 | 200.56 | 15.00 | 215.56 |
| 99-189 | 022-482-040 | 1 | 200.56 | 15.00 | 215.56 |
| 99-190 | 022-482-041 | 1 | 200.56 | 15.00 | 215.56 |
| 99-191 | 022-482-042 | 1 | 200.56 | 15.00 | 215.56 |
| 99-192 | 022-482-043 | 1 | 200.56 | 15.00 | 215.56 |
| 99-193 | 022-482-044 | 1 | 200.56 | 15.00 | 215.56 |
| 99-194 | 022-482-045 | 1 | 200.56 | 15.00 | 215.56 |
| 99-195 | 022-482-046 | 1 | 200.56 | 15.00 | 215.56 |
| 99-196 | 022-482-047 | 1 | 200.56 | 15.00 | 215.56 |
| 99-197 | 022-482-048 | 1 | 200.56 | 15.00 | 215.56 |
| 99-198 | 022-482-049 | 1 | 200.56 | 15.00 | 215.56 |
| 99-199 | 022-482-050 | 1 | 200.56 | 15.00 | 215.56 |
| 99-200 | 022-482-051 | 1 | 200.56 | 15.00 | 215.56 |
| 99-201 | 022-482-052 | 1 | 200.56 | 15.00 | 215.56 |
| 99-202 | 022-482-053 | 1 | 200.56 | 15.00 | 215.56 |
| 99-203 | 022-482-054 | 1 | 200.56 | 15.00 | 215.56 |
| 99-204 | 022-482-055 | 1 | 200.56 | 15.00 | 215.56 |
| 99-205 | 022-482-056 | 1 | 200.56 | 15.00 | 215.56 |
| 99-206 | 022-482-057 | 1 | 200.56 | 15.00 | 215.56 |
| 99-207 | 022-482-058 | 1 | 200.56 | 15.00 | 215.56 |
| 99-208 | 022-482-059 | 1 | 200.56 | 15.00 | 215.56 |
| 99-209 | 022-482-060 | 1 | 200.56 | 15.00 | 215.56 |
| 99-210 | 022-482-061 | 1 | 200.56 | 15.00 | 215.56 |
| 99-211 | 022-482-062 | 1 | 200.56 | 15.00 | 215.56 |
| 99-212 | 022-482-063 | 1 | 200.56 | 15.00 | 215.56 |
| 99-213 | 022-482-064 | 1 | 200.56 | 15.00 | 215.56 |
| 99-214 | 022-482-065 | 1 | 200.56 | 15.00 | 215.56 |
| 99-215 | 022-482-066 | 1 | 200.56 | 15.00 | 215.56 |
| 99-216 | 022-482-067 | 1 | 200.56 | 15.00 | 215.56 |
| 99-217 | 022-482-068 | 1 | 200.56 | 15.00 | 215.56 |
| 99-218 | 022-482-069 | 1 | 200.56 | 15.00 | 215.56 |
| 99-219 | 022-482-070 | 1 | 200.56 | 15.00 | 215.56 |
| 99-220 | 022-482-071 | 1 | 200.56 | 15.00 | 215.56 |
| 99-221 | 022-482-072 | 1 | 200.56 | 15.00 | 215.56 |
| 99-222 | 022-482-073 | 1 | 200.56 | 15.00 | 215.56 |
| 99-223 | 022-482-074 | 1 | 200.56 | 15.00 | 215.56 |
| 99-224 | 022-482-075 | 1 | 200.56 | 15.00 | 215.56 |
| 99-225 | 022-482-076 | 1 | 200.56 | 15.00 | 215.56 |
| 99-226 | 022-482-077 | 1 | 200.56 | 15.00 | 215.56 |
| 99-227 | 022-482-078 | 1 | 200.56 | 15.00 | 215.56 |
| 99-228 | 022-482-079 | 1 | 200.56 | 15.00 | 215.56 |

| ASSESSMENT NUMBER | ASSESSOR'S PARCEL NO. | ASSESSMENT UNITS | ASSESSMENT 2007/2008 | COLLECTION FEE | TOTAL LEVY |
|-------------------|-----------------------|------------------|----------------------|----------------|------------|
| 99-229 | 022-482-080 | 1 | \$200.56 | \$15.00 | \$215.56 |
| 99-230 | 022-482-081 | 1 | 200.56 | 15.00 | 215.56 |
| 99-231 | 022-482-082 | 1 | 200.56 | 15.00 | 215.56 |
| 99-232 | 022-482-083 | 1 | 200.56 | 15.00 | 215.56 |
| 99-233 | 022-482-084 | 1 | 200.56 | 15.00 | 215.56 |
| 99-234 | 022-482-085 | 1 | 200.56 | 15.00 | 215.56 |
| 99-235 | 022-482-086 | 1 | 200.56 | 15.00 | 215.56 |
| 99-236 | 022-482-087 | 1 | 200.56 | 15.00 | 215.56 |
| 99-237 | 022-482-088 | 1 | 200.56 | 15.00 | 215.56 |
| 99-238 | 022-482-089 | 1 | 200.56 | 15.00 | 215.56 |
| 99-239 | 022-482-090 | 1 | 200.56 | 15.00 | 215.56 |
| 99-240 | 022-482-091 | 1 | 200.56 | 15.00 | 215.56 |
| 99-241 | 022-482-092 | 1 | 200.56 | 15.00 | 215.56 |
| 99-242 | 022-482-093 | 1 | 200.56 | 15.00 | 215.56 |
| 99-243 | 022-482-094 | 1 | 200.56 | 15.00 | 215.56 |
| 99-244 | 022-482-095 | 1 | 200.56 | 15.00 | 215.56 |
| 99-245 | 022-482-096 | 1 | 200.56 | 15.00 | 215.56 |
| 99-246 | 022-482-097 | 1 | 200.56 | 15.00 | 215.56 |
| 99-247 | 022-482-098 | 1 | 200.56 | 15.00 | 215.56 |
| 99-248 | 022-482-099 | 1 | 200.56 | 15.00 | 215.56 |
| 99-249 | 022-482-100 | 1 | 200.56 | 15.00 | 215.56 |
| 99-114 | 022-483-001 | 1 | 200.56 | 15.00 | 215.56 |
| 99-115 | 022-483-002 | 1 | 200.56 | 15.00 | 215.56 |
| 99-116 | 022-483-003 | 1 | 200.56 | 15.00 | 215.56 |
| 99-117 | 022-483-004 | 1 | 200.56 | 15.00 | 215.56 |
| 99-118 | 022-483-005 | 1 | 200.56 | 15.00 | 215.56 |
| 99-119 | 022-483-006 | 1 | 200.56 | 15.00 | 215.56 |
| 99-120 | 022-483-007 | 1 | 200.56 | 15.00 | 215.56 |
| 99-121 | 022-483-008 | 1 | 200.56 | 15.00 | 215.56 |
| 99-122 | 022-483-009 | 1 | 200.56 | 15.00 | 215.56 |
| 99-123 | 022-483-010 | 1 | 200.56 | 15.00 | 215.56 |
| 99-124 | 022-483-011 | 1 | 200.56 | 15.00 | 215.56 |
| 99-125 | 022-483-012 | 1 | 200.56 | 15.00 | 215.56 |
| 99-126 | 022-483-013 | 1 | 200.56 | 15.00 | 215.56 |
| 99-127 | 022-483-014 | 1 | 200.56 | 15.00 | 215.56 |
| 99-128 | 022-483-015 | 1 | 200.56 | 15.00 | 215.56 |
| 99-129 | 022-483-016 | 1 | 200.56 | 15.00 | 215.56 |
| 99-130 | 022-483-017 | 1 | 200.56 | 15.00 | 215.56 |
| 99-131 | 022-483-018 | 1 | 200.56 | 15.00 | 215.56 |
| 99-132 | 022-483-019 | 1 | 200.56 | 15.00 | 215.56 |
| 99-133 | 022-483-020 | 1 | 200.56 | 15.00 | 215.56 |
| 99-134 | 022-483-021 | 1 | 200.56 | 15.00 | 215.56 |
| 99-135 | 022-483-022 | 1 | 200.56 | 15.00 | 215.56 |
| 99-136 | 022-483-023 | 1 | 200.56 | 15.00 | 215.56 |
| 99-137 | 022-483-024 | 1 | 200.56 | 15.00 | 215.56 |
| 99-138 | 022-483-025 | 1 | 200.56 | 15.00 | 215.56 |
| 99-139 | 022-483-026 | 1 | 200.56 | 15.00 | 215.56 |
| 99-140 | 022-483-027 | 1 | 200.56 | 15.00 | 215.56 |
| 99-141 | 022-483-028 | 1 | 200.56 | 15.00 | 215.56 |
| 99-142 | 022-483-029 | 1 | 200.56 | 15.00 | 215.56 |
| 99-143 | 022-483-030 | 1 | 200.56 | 15.00 | 215.56 |

| ASSESSMENT NUMBER | ASSESSOR'S PARCEL NO. | ASSESSMENT UNITS | ASSESSMENT 2007/2008 | COLLECTION FEE | TOTAL LEVY |
|-------------------|-----------------------|------------------|----------------------|-------------------|--------------------|
| 99-144 | 022-483-031 | 1 | \$200.56 | \$15.00 | \$215.56 |
| 99-145 | 022-483-032 | 1 | 200.56 | 15.00 | 215.56 |
| 99-146 | 022-483-033 | 1 | 200.56 | 15.00 | 215.56 |
| 99-147 | 022-483-034 | 1 | 200.56 | 15.00 | 215.56 |
| 99-148 | 022-483-035 | 1 | 200.56 | 15.00 | 215.56 |
| 99-149 | 022-483-036 | 1 | 200.56 | 15.00 | 215.56 |
| 99-150 | 022-483-037 | 1 | 200.56 | 15.00 | 215.56 |
| 99-151 | 022-483-038 | 1 | 200.56 | 15.00 | 215.56 |
| 99-152 | 022-483-039 | 1 | 200.56 | 15.00 | 215.56 |
| 99-153 | 022-483-040 | 1 | 200.56 | 15.00 | 215.56 |
| 99-154 | 022-483-041 | 1 | 200.56 | 15.00 | 215.56 |
| 99-155 | 022-483-042 | 1 | 200.56 | 15.00 | 215.56 |
| 99-156 | 022-483-043 | 1 | 200.56 | 15.00 | 215.56 |
| 99-157 | 022-483-044 | 1 | 200.56 | 15.00 | 215.56 |
| 99-158 | 022-483-045 | 1 | 200.56 | 15.00 | 215.56 |
| 99-159 | 022-483-046 | 1 | 200.56 | 15.00 | 215.56 |
| 99-160 | 022-483-047 | 1 | 200.56 | 15.00 | 215.56 |
| 99-161 | 022-483-048 | 1 | 200.56 | 15.00 | 215.56 |
| 99-162 | 022-483-049 | 1 | 200.56 | 15.00 | 215.56 |
| 99-163 | 022-483-050 | 1 | 200.56 | 15.00 | 215.56 |
| 99-164 | 022-483-051 | 1 | 200.56 | 15.00 | 215.56 |
| 99-165 | 022-483-052 | 1 | 200.56 | 15.00 | 215.56 |
| 99-166 | 022-483-053 | 1 | 200.56 | 15.00 | 215.56 |
| 99-167 | 022-483-054 | 1 | 200.56 | 15.00 | 215.56 |
| 99-168 | 022-483-055 | 1 | 200.56 | 15.00 | 215.56 |
| 99-169 | 022-483-056 | 1 | 200.56 | 15.00 | 215.56 |
| 99-170 | 022-483-057 | 1 | 200.56 | 15.00 | 215.56 |
| 99-171 | 022-483-058 | 1 | 200.56 | 15.00 | 215.56 |
| 99-172 | 022-483-059 | 1 | 200.56 | 15.00 | 215.56 |
| 99-173 | 022-483-060 | 1 | 200.56 | 15.00 | 215.56 |
| 99-174 | 022-483-061 | 1 | 200.56 | 15.00 | 215.56 |
| 99-175 | 022-483-062 | 1 | 200.56 | 15.00 | 215.56 |
| 99-176 | 022-483-063 | 1 | 200.56 | 15.00 | 215.56 |
| 99-177 | 022-483-064 | 1 | 200.56 | 15.00 | 215.56 |
| 99-178 | 022-483-065 | 1 | 200.56 | 15.00 | 215.56 |
| 99-179 | 022-483-066 | 1 | 200.56 | 15.00 | 215.56 |
| 99-180 | 022-483-067 | 1 | 200.56 | 15.00 | 215.56 |
| 99-181 | 022-483-068 | 1 | 200.56 | 15.00 | 215.56 |
| 99-182 | 022-483-069 | 1 | 200.56 | 15.00 | 215.56 |
| 99-183 | 022-483-070 | 1 | 200.56 | 15.00 | 215.56 |
| 99-184 | 022-483-071 | 1 | 200.56 | 15.00 | 215.56 |
| TOTAL | | 347 | \$69,594.32 | \$5,205.00 | \$74,799.32 |

| ASSESSMENT NUMBER | ASSESSOR'S PARCEL NO. | ASSESSMENT UNITS | ASSESSMENT 2007/2008 | COLLECTION FEE | TOTAL LEVY |
|-------------------|-----------------------|------------------|----------------------|----------------|-------------|
| 99-144 | 022-483-031 | 1 | \$200.56 | \$15.00 | \$215.56 |
| 99-145 | 022-483-032 | 1 | 200.56 | 15.00 | 215.56 |
| 99-146 | 022-483-033 | 1 | 200.56 | 15.00 | 215.56 |
| 99-147 | 022-483-034 | 1 | 200.56 | 15.00 | 215.56 |
| 99-148 | 022-483-035 | 1 | 200.56 | 15.00 | 215.56 |
| 99-149 | 022-483-036 | 1 | 200.56 | 15.00 | 215.56 |
| 99-150 | 022-483-037 | 1 | 200.56 | 15.00 | 215.56 |
| 99-151 | 022-483-038 | 1 | 200.56 | 15.00 | 215.56 |
| 99-152 | 022-483-039 | 1 | 200.56 | 15.00 | 215.56 |
| 99-153 | 022-483-040 | 1 | 200.56 | 15.00 | 215.56 |
| 99-154 | 022-483-041 | 1 | 200.56 | 15.00 | 215.56 |
| 99-155 | 022-483-042 | 1 | 200.56 | 15.00 | 215.56 |
| 99-156 | 022-483-043 | 1 | 200.56 | 15.00 | 215.56 |
| 99-157 | 022-483-044 | 1 | 200.56 | 15.00 | 215.56 |
| 99-158 | 022-483-045 | 1 | 200.56 | 15.00 | 215.56 |
| 99-159 | 022-483-046 | 1 | 200.56 | 15.00 | 215.56 |
| 99-160 | 022-483-047 | 1 | 200.56 | 15.00 | 215.56 |
| 99-161 | 022-483-048 | 1 | 200.56 | 15.00 | 215.56 |
| 99-162 | 022-483-049 | 1 | 200.56 | 15.00 | 215.56 |
| 99-163 | 022-483-050 | 1 | 200.56 | 15.00 | 215.56 |
| 99-164 | 022-483-051 | 1 | 200.56 | 15.00 | 215.56 |
| 99-165 | 022-483-052 | 1 | 200.56 | 15.00 | 215.56 |
| 99-166 | 022-483-053 | 1 | 200.56 | 15.00 | 215.56 |
| 99-167 | 022-483-054 | 1 | 200.56 | 15.00 | 215.56 |
| 99-168 | 022-483-055 | 1 | 200.56 | 15.00 | 215.56 |
| 99-169 | 022-483-056 | 1 | 200.56 | 15.00 | 215.56 |
| 99-170 | 022-483-057 | 1 | 200.56 | 15.00 | 215.56 |
| 99-171 | 022-483-058 | 1 | 200.56 | 15.00 | 215.56 |
| 99-172 | 022-483-059 | 1 | 200.56 | 15.00 | 215.56 |
| 99-173 | 022-483-060 | 1 | 200.56 | 15.00 | 215.56 |
| 99-174 | 022-483-061 | 1 | 200.56 | 15.00 | 215.56 |
| 99-175 | 022-483-062 | 1 | 200.56 | 15.00 | 215.56 |
| 99-176 | 022-483-063 | 1 | 200.56 | 15.00 | 215.56 |
| 99-177 | 022-483-064 | 1 | 200.56 | 15.00 | 215.56 |
| 99-178 | 022-483-065 | 1 | 200.56 | 15.00 | 215.56 |
| 99-179 | 022-483-066 | 1 | 200.56 | 15.00 | 215.56 |
| 99-180 | 022-483-067 | 1 | 200.56 | 15.00 | 215.56 |
| 99-181 | 022-483-068 | 1 | 200.56 | 15.00 | 215.56 |
| 99-182 | 022-483-069 | 1 | 200.56 | 15.00 | 215.56 |
| 99-183 | 022-483-070 | 1 | 200.56 | 15.00 | 215.56 |
| 99-184 | 022-483-071 | 1 | 200.56 | 15.00 | 215.56 |
| TOTAL | | 347 | \$69,594.32 | \$5,205.00 | \$74,799.32 |